

# FISHWAY STATUS REPORT

**Date:** 1/19/2014  
**Inspection Period:** 1/12 thru 1/18/2014

All JD Fishways are inspected once per day during winter season;  
 frequent monitoring of the PLC displays in SMF Fisheries Office as necessary.



**US Army Corps  
of Engineers**  
Portland District

**JOHN DAY DAM**  
 JD/WC Project-Fisheries  
 P.O. Box 823  
 Rufus, Oregon 97050  
 Phone: 541-506-7860

John Day Dam	Inspections	Criteria	Total Number of Inspections:	7	Temperature:	40.0 F
	Out of Criteria	Limit			Secchi:	0.0 Ft.
<b>NORTH FISHWAY</b>			In regular service and meeting the optimal FPP criteria			
Exit differential	0	≤ 0.5'				
Exit Control weirs	0	High setting	High setting is normal for JDN			
Count station differential	0	≤ 0.3'				
Weir crest depth	0	1.0' ± 0.1'				
Entrance differential	0	1.0' - 2.0'	AVG	1.5		
<b>SOUTH FISHWAY</b>			OOS for the annual maintenance outage since 1/4/14 PM. Dewatered 1/7/2014 AM.			
Exit differential	N/A	≤ 0.5'				
Exit Control weirs	N/A	MID setting	MID is normal for JDS			
Count station differential	N/A	≤ 0.3'				
Weir crest depth	N/A	1.0' ± 0.1'				
South entrance differential	N/A	1.0' - 2.0'	AVG	oos		
Entrance weir SE1	N/A	depth (≥ 8')	AVG	oos		
Collection channel velocity	N/A	1.5 - 4 fps	AVG	3.12		
Bay 1 differential	N/A	1.0' - 2.0'	AVG	oos		
N. Entrance PH(Bay 19)differential	N/A	1.0' - 2.0'	AVG	oos		
Entrance weir NE1	N/A	depth (≥ 8')	AVG	oos		
Entrance weir NE2	N/A	depth (≥ 8')	AVG	oos		
<b>JUVENILE PASSAGE</b>			OOS for winter maintenance since 12/20. RTS in late March 2014.			
Forebay/bypass conduit differential	N/A	4.0' - 5.0'	AVG	4.6		
Submersible traveling screens	N/A	visual inspect				
Turbine trashrack drawdown	N/A	<1.5', wkly				
Vert barrier screen drawdown	N/A	<1.5', wkly				
Spill volume	N/A	n/a				
Spill pattern	N/A	n/a				
Turbine Unit Priority	N/A	per FPP				
Turbine 1% Efficiency	N/A	per FPP				

**SMOLT MONITORING FACILITY**

**Operation:** SMF OOS since 12/17/13. RTS mid March 2014

**Debris:** N/A

**Maintenance:**

SMF fully winterized, annual maintenance underway.

SMF CCTV replacement underway; new display monitors and control console already installed. Replacement camera will be installed soon.

**Research:** None

**Fallbacks:** AVG: 0 MAX: 0 MIN: 0

**OTHER ISSUES:****JOHN DAY**

**Birds:** See Avian tabs.

120 avian lines are properly installed. Five lines are missing; one attaching to Navlock broke on 1/10/14. JD Management preparing a plan for the missing lines' replacement before 2014 passage season.

**Operations:**

JD North Fishway returned to regular service on 12/19 and it has been meeting the optimal FPP criteria since.

JD South Fishway dewatered/OOS since 1/07/14. Collection channel dewatered on 1/09. Annual PMs and maintenance underway; RTS mid March.

All STSs were removed from MU gatewells for winter maintenance by 19 December. JBS started 1/3 open orifices rotation schedule on 12/20.

JBS collection channel is scheduled for dewatering/ inspection in 4 February 2014.

**Maintenance:**

Calibration: 12/8/2013 All JD Fishways' PLCs/ water level sensors were within 0.3' margin of error.

**Research:**

Fish counting at both JD Fishways ended 10/31/13 . Video counting began 11/1 and will continue through the winter.

Adult Salmonids Radio telemetry evaluations are ongoing at both JD adult fishway. University of Idaho crew is in charge of detecting of all adult adult salmonids, which were first tagged at Bonneville Dam.

Glen A. Smith PE

Date: \_\_\_ 23-Jan-14

OPM John Day/Willow Creek Project

2007-2013 Water Temps JDA w/ 12yr avg



## JDA COLLECTION CHANNEL VELOCITY

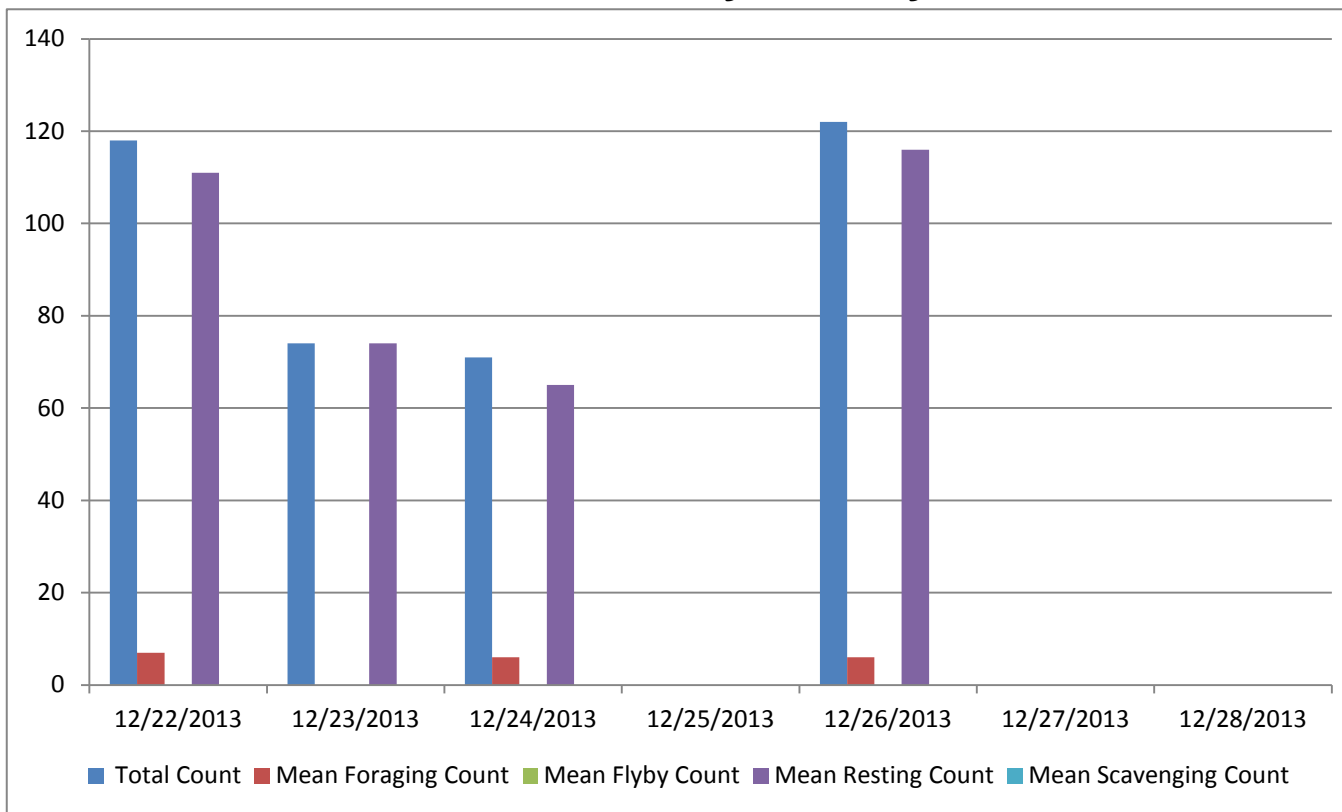
Date 21-Dec-13

By: pk

Bay(s)	Time	Sec.	Velocity (f/s)
0-2	0:01:23	83	2.17
2 - 4	0:02:20	140	3.16
4 - 6	0:03:16	196	3.21
6 - 8	0:04:14	254	3.10
8 - 10	0:05:10	310	3.21
10 - 12	0:06:10	370	3.00
12 - 14	0:07:17	437	2.69
14 - 16	0:08:13	493	3.21
16 - 18	0:08:55	535	4.29

**3.12**

## Bird Count by Activity



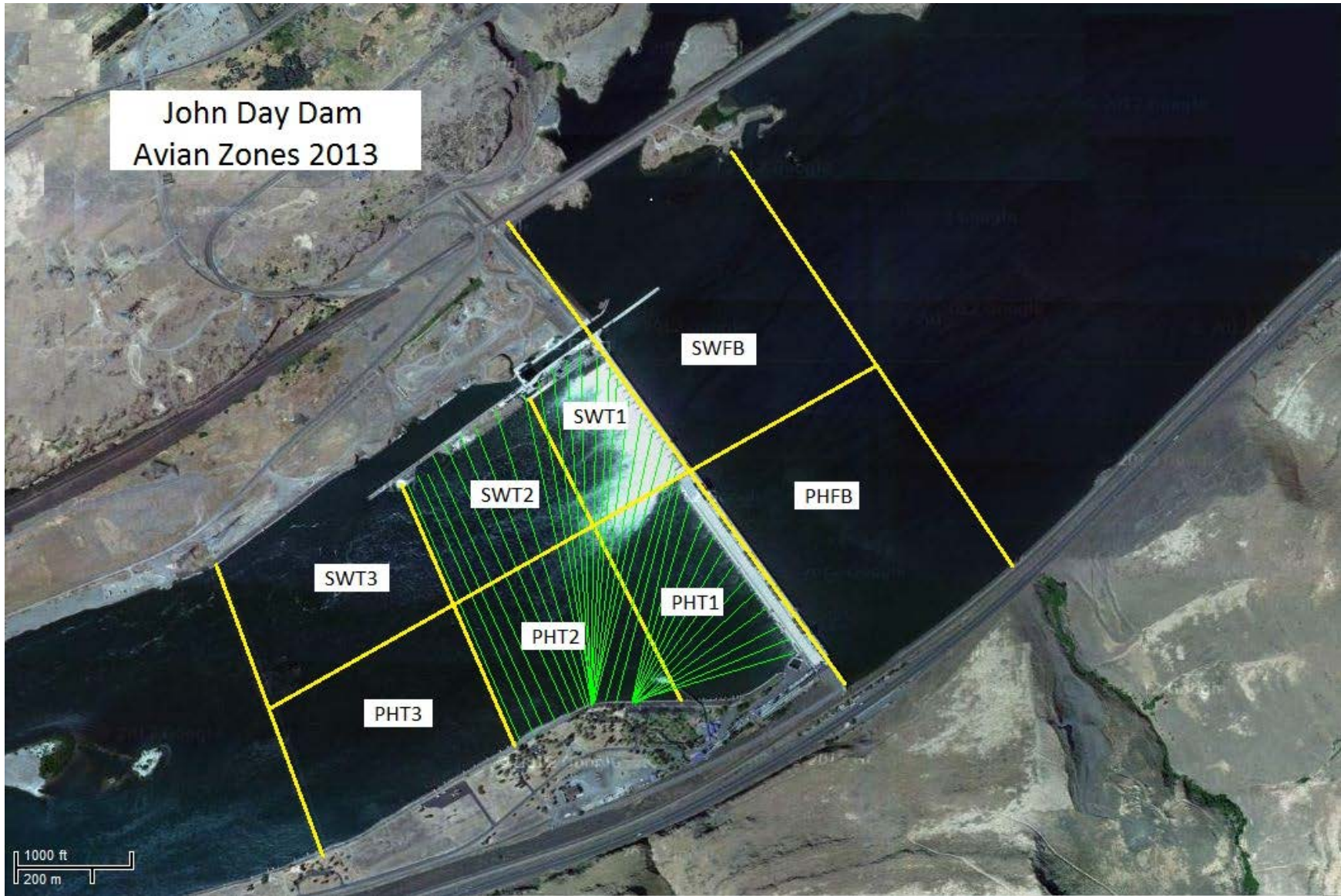
Date	Total Count	Mean Foraging Count	Mean Flyby Count	Mean Resting Count	Mean Scavenging Count
12/22/2013	118	7		111	
12/23/2013	74			74	
12/24/2013	71	6		65	
12/25/2013					
12/26/2013	122	6		116	
12/27/2013					
12/28/2013					

**Seasonal High numbers of GULLS  
in the Forebay and on the WING WALL.**

**Christmas**

**Heavy Fog**

John Day Dam  
Avian Zones 2013



**John Day:**

	Temp:	Secchi:		Fallbacks
Sun	40		oos	
Mon	40		oos	
Tues	40		oos	
Wed	40		oos	
Thur	40		oos	
Fri	39		oos	
Sat	41		oos	
AVG:	40.0	AVG:		AVG
				MAX
				MIN

	NE1	NE2	S.Ent	SE1	N.Ent	JBS Diff	Bay1	Bay19
Sun	oos	oos	oos	oos	1.4	4.6	oos	oos
Sun								
Mon	oos	oos	oos	oos	1.7	4.6	oos	oos
Mon								
Tues	oos	oos	oos	oos	1.5	4.6	oos	oos
Tues								
Wed	oos	oos	oos	oos	1.5	4.5	oos	oos
Wed								
Thur	oos	oos	oos	oos	1.5	4.6	oos	oos
Thur								
Fri	oos	oos	oos	oos	1.5	4.6	oos	oos
Fri								
Sat	oos	oos	oos	oos	1.5	4.6	oos	oos
Sat								
AVG:	oos	oos	oos	oos	1.5	4.6	oos	oos